



46B Tara Street Sylvania NSW

4 🏠 3 🚗 2 🚗

Cleverly created to provide an ultra-modern living space in a superb waterside location, this designer duplex is the perfect home for those who want to live and entertain in easy style. Light-filled interiors feature an array of smart contemporary touches and a well-proportioned floorplan highlighted by a flowing open layout that integrates seamlessly with the outside and include sweeping views over the water.

The bright home has been stylishly designed throughout and features level access from the main living area to a sheltered BBQ patio and private garden, where there is a luxury inground swimming pool and paved poolside patio. A second living space opens onto a covered front terrace plus there is an upper-level balcony, both commanding an all-encompassing backdrop of the Georges River.

Price : \$ 2,300,000

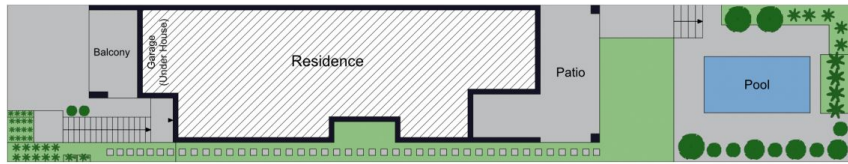
View : <https://www.luxebyymm.com.au/sale/nsw/sutherland/sylvania/residential/semi-detached/7503429>



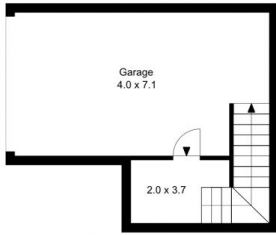
Maurice Maroon
02 9547 0008



Heidi Baines
02 9547 0008



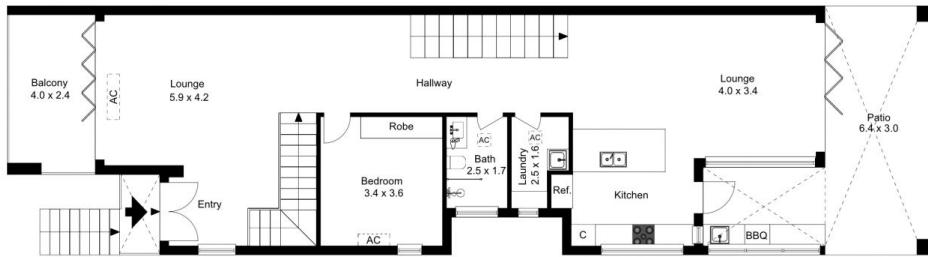
Site Plan



Ground Floor



2nd Floor



1st Floor



The site plan and floor plan are not to scale; measurements are indicative and in metres. Bushes and trees are placed for illustration purposes. Plans should not be relied on. Interested parties should make and rely on their own enquiries.

Produced by **DIAKRIT**



Ground Floor



2nd Floor



1st Floor



The floor plan is not to scale; measurements are indicative and in metres. All features included in this 3D plan are for inspiration purposes only. This is not an exact replica of the property or the position of exterior elements. Plans should not be relied on. Interested parties should make and rely on their own enquiries.

Produced by **DIAKRIT**