



116 Connells Point Road Connells Point NSW

4 2 3

This home is positioned in the heart of Connells Points, elevated on the corner the home is bathed in natural light and perfect for the growing family.

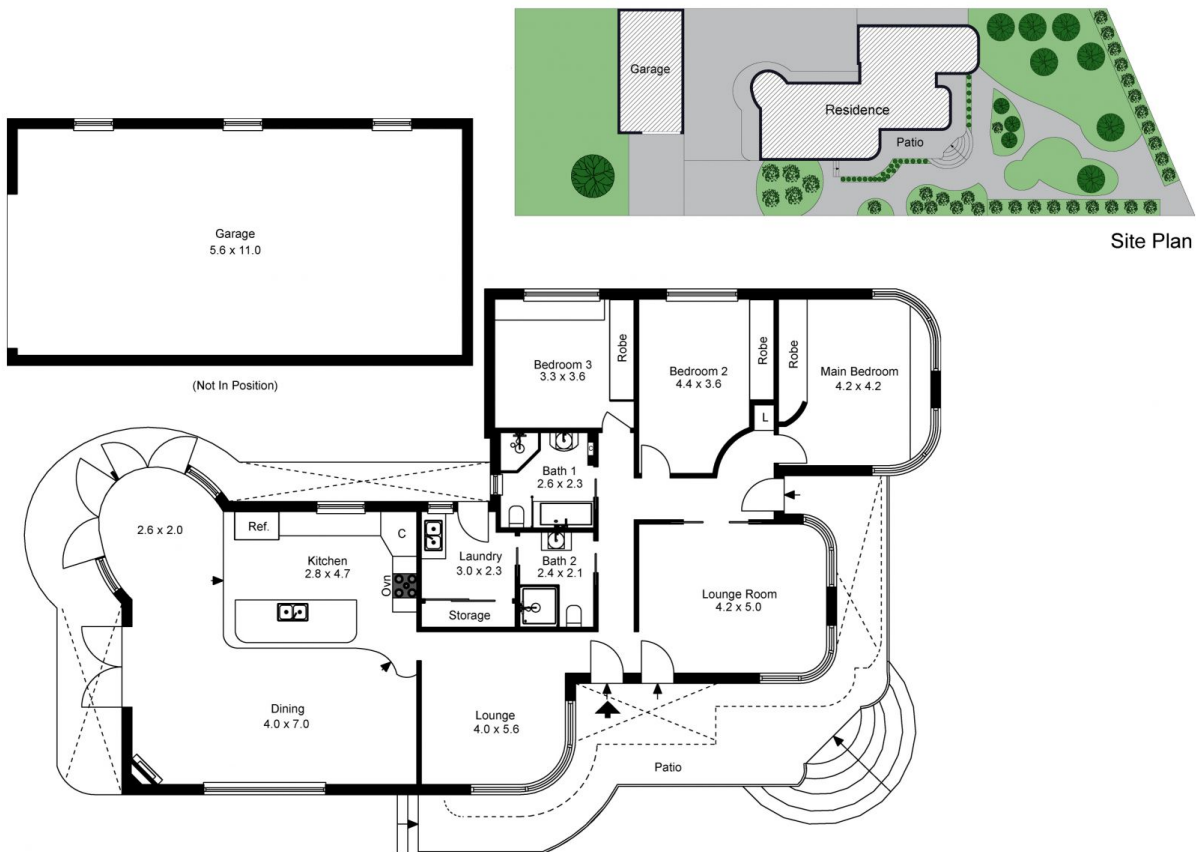
View : <https://www.luxebymm.com.au/lease/nsw/st-george/connells-point/residential/house/7546720>

Property features include;

- Beautiful established gardens with enclosed fenced grassed level yard
- 3 Generous sized bedrooms, plus a multifunction room/4th bedroom
- Close to schools, public transport and shops
- 3 Car garage with space for storage
- Main bathroom with separate shower and bathtub
- Hardwoods timber flooring throughout all the bedrooms and second/casual living areas
- Close to schools, public transport and shops.



Sookie Yue Luo
02 9547 0008



Site Plan

The floor plan is not to scale; measurements are indicative and in metres. Exterior elements are not in position. Plans should not be relied on. Interested parties should make and rely on their own enquiries.

Produced by DIAKRIT



The floor plan is not to scale; measurements are indicative and in metres. All features included in this 3D plan are for inspiration purposes only. This is not an exact replica of the property or the position of exterior elements. Plans should not be relied on. Interested parties should make and rely on their own enquiries.

Produced by DIAKRIT