

### 1/96-98 Loftus Street Bundeena NSW

5 4 3

Contemporary luxury and seaside style define this stunning residence is over 470sqm. Quality finishes, space and outstanding design combine to create an irresistible lifestyle home. Set in a premium oceanfront position directly opposite Hordern's Beach, it is the epitome of excellence boasting substantial proportions and leafy views over the water.

Spread over two generous levels and providing a flexible living environment, interiors feature a supremely spacious open living area and large floor-to-ceiling walls of glass that highlight the relaxing outlook and natural light. A large north-facing deck makes a great space to entertain while soaking up the beach outlook, plus there is a showpiece chef's kitchen with stone island bench, premium appliances and a large walk-in pantry.

**Price** : \$ 3,150,000  
**Land Size** : 470 sqm  
**View** : <https://www.luxebyymm.com.au/sale/nsw/sut/herland/bundeena/residential/apartment/7665612>

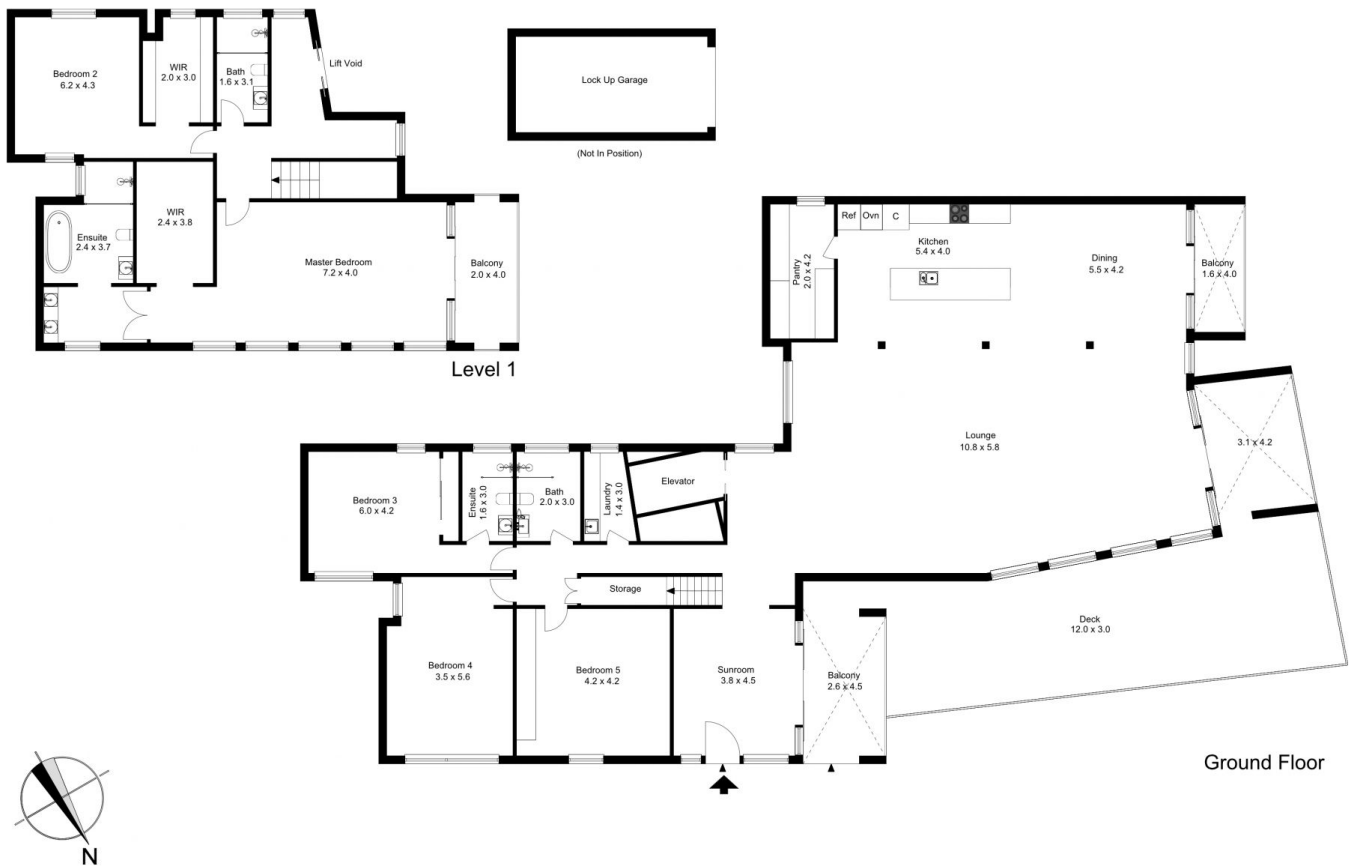


**Johnny Youssif**  
02 9547 0008



**Maurice Maroon**  
02 9547 0008





The floor plan is not to scale; measurements are indicative and in metres. Exterior elements are not in position. Plans should not be relied on. Interested parties should make and rely on their own enquiries.

Produced by **DIAKRIT**



The floor plan is not to scale; measurements are indicative and in metres. All features included in this 3D plan are for inspiration purposes only. This is not an exact replica of the property or the position of exterior elements. Plans should not be relied on. Interested parties should make and rely on their own enquiries.

Produced by **DIAKRIT**