

### 38 Burgess Street Beverley Park NSW

4 3 2

This attractive brick residence represents a great chance to launch into one of Beverley Park's most sought-after streets in a property that will no doubt create widespread appeal. It displays a generous two-storey design that caters well for both family living and entertaining, while delivering a well-proportioned home with plenty of potential to add even more value down the track if desired.

The property sits proudly on a high set block of nearly 700sqm with a wide 15m street frontage and a spacious backyard that comes complete with a private and secure level lawn, inground gas heated swimming pool and a Vergola-covered patio for entertaining.

As you step inside, you'll be greeted by a bright interior that's been immaculately presented to provide an easy-to-manage family environment and an amazing place

**Land Size** : 697 sqm  
**View** : <https://www.luxebymm.com.au/sale/nsw/st-george/beverley-park/residential/house/7744161>



**Maurice Maroon**  
02 9547 0008



**Heidi Baines**  
02 9547 0008





First Floor



Ground Floor

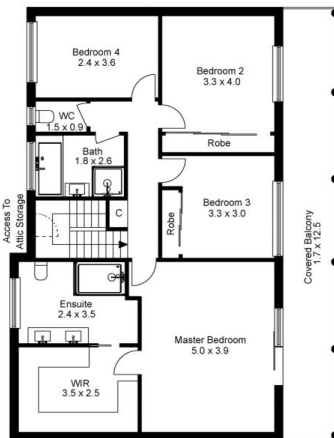
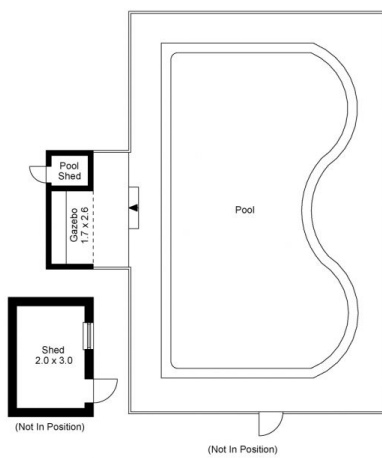


The floor plan is not to scale; measurements are indicative and in metres. All features included in this 3D plan are for inspiration purposes only. This is not an exact replica of the property or the position of exterior elements. Plans should not be relied on. Interested parties should make and rely on their own enquiries.

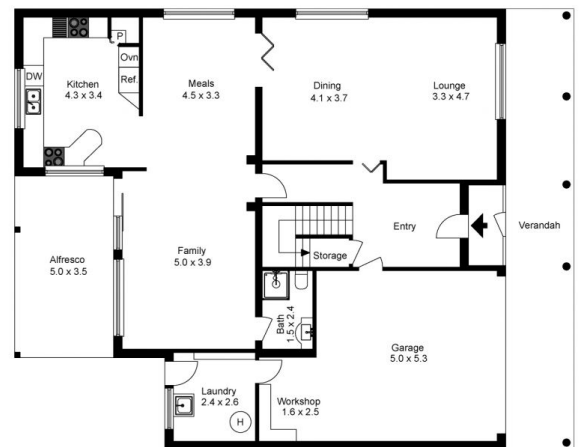
Produced by **DIAKRIT**



Site Plan



First Floor



Ground Floor



The site plan and floor plan are not to scale; measurements are indicative and in metres. Bushes and trees are placed for illustration purposes. Plans should not be relied on. Interested parties should make and rely on their own enquiries.

Produced by **DIAKRIT**