



7A/508-510 Bunnerong Road Matraville NSW

2  2  2 

This superb penthouse apartment showcases contemporary flair throughout with impressive proportions, a light-filled layout and panoramic views over the surrounding area. Set on the top floor of a quality security building, it offers a fresh and airy living space with a flowing floorplan that takes full advantage of natural light and the elevated outlook, plus private access to its own 80sqm rooftop courtyard.

A spacious design enjoys excellent cross flow of air with big windows to ensure excellent sunlight. A covered balcony has a spiral staircase leading up to the rooftop courtyard that makes outdoor entertaining easy while enjoying the spectacular views to Port Botany, plus there is a high spec kitchen that's been cleverly designed and fitted with superior appliances. Two bedrooms include a large main with built-ins, ensuite and access to a second sunlit

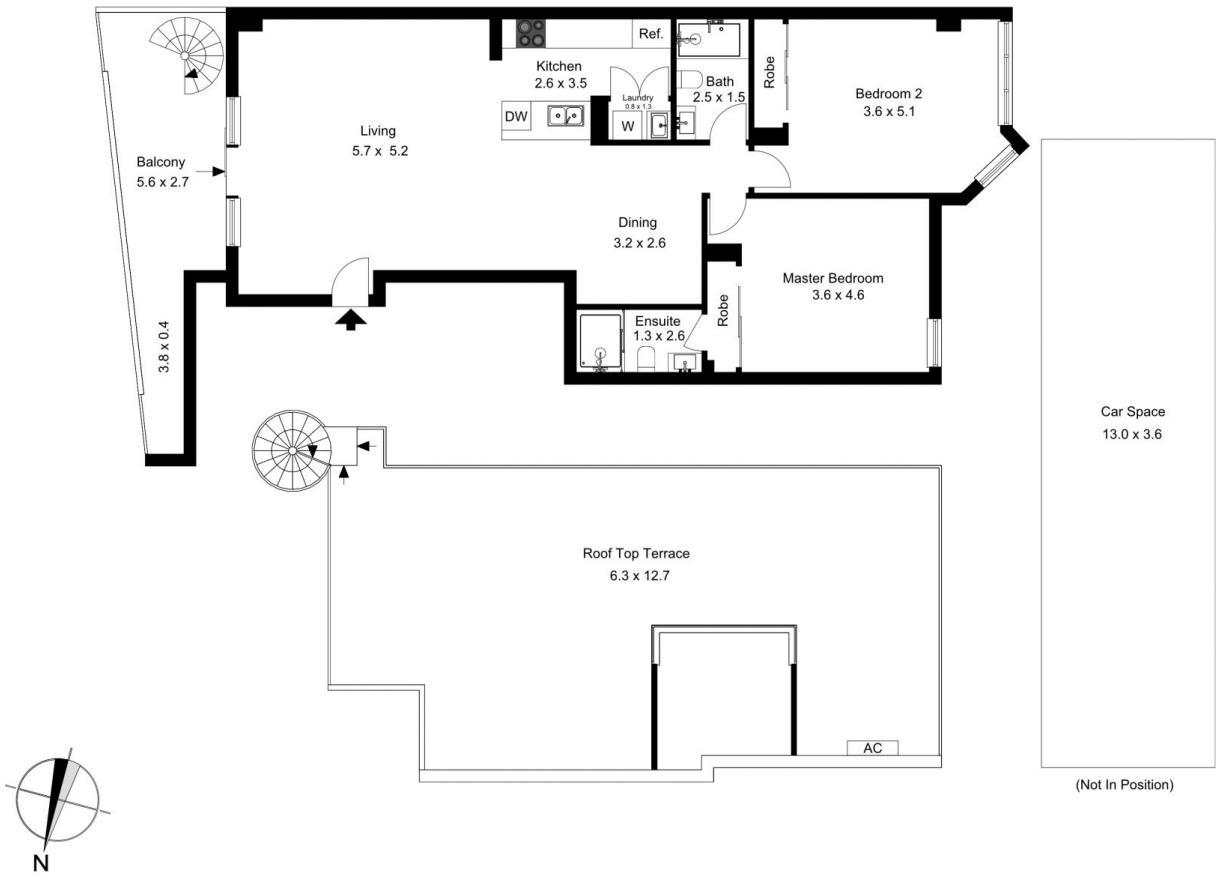
Price : \$ 900,000
Land Size : 178 sqm
View : <https://www.luxebyymm.com.au/sale/nsw/eastern-suburbs/matraville/residential/apartment/7785378>



Johnny Youssif
02 9547 0008



Maurice Maroon
02 9547 0008



The floor plan is not to scale; measurements are indicative and in metres. Exterior elements are not in position. Plans should not be relied on. Interested parties should make and rely on their own enquiries.

Produced by **DIAKRIT**



The floor plan is not to scale; measurements are indicative and in metres. All features included in this 3D plan are for inspiration purposes only. This is not an exact replica of the property or the position of exterior elements. Plans should not be relied on. Interested parties should make and rely on their own enquiries.

Produced by **DIAKRIT**