






## 24 Venetia Street Sylvania NSW

4  3  5 

A light-filled and ultra-contemporary design is revealed behind the classic facade of this immaculate two-storey residence. Situated on the Kangaroo Point side of Sylvania, this home sits on over 700sqm in a quiet cul-de-sac location. Cleverly transformed to offer a quality family residence, it has been completely renewed throughout and features a range of high-end finishes and a layout that's great for those who love to live and entertain in effortless style.

This sensational home is presented in the classic tradition yet cleverly redesigned for today's lifestyle and provides many versatile options for large families with a great dual living layout for multi-generational households. It is also very peacefully located in a boutique waterside cul-de-sac that's within easy walking access to Southgate Shopping Centre, waterfront parks and schools, as well as being just

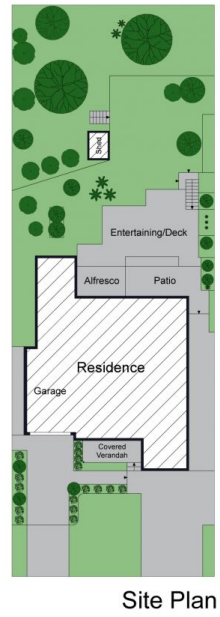
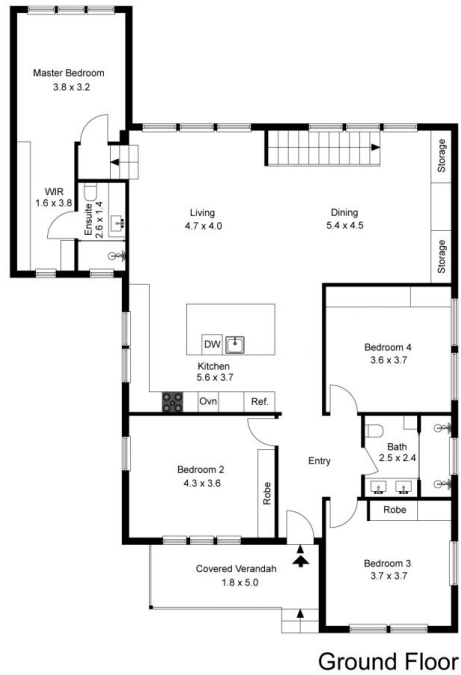
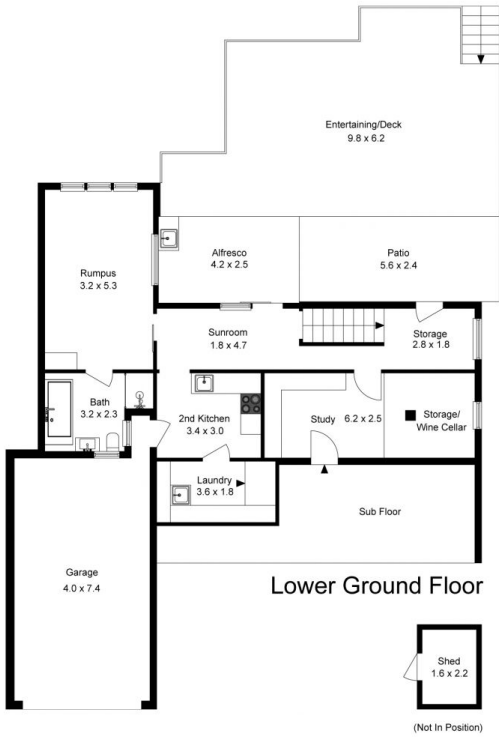
**Price** : \$ 1,980,000  
**Land Size** : 702 sqm  
**View** : <https://www.luxebyymm.com.au/sale/nsw/sutherlandland/sylvania/residential/house/7809689>



**Maurice Maroon**  
02 9547 0008



**Frances Maroon**  
02 9547 0008



The floor plan is not to scale; measurements are indicative and in metres. Exterior elements are not in position. Plans should not be relied on. Interested parties should make and rely on their own enquiries.

Produced by **DIAKRIT**



The floor plan is not to scale; measurements are indicative and in metres. All features included in this 3D plan are for inspiration purposes only. This is not an exact replica of the property or the position of exterior elements. Plans should not be relied on. Interested parties should make and rely on their own enquiries.

Produced by **DIAKRIT**