



**1/1A Roslyn Street Potts Point NSW**

1  1 

Welcome to a charming and cozy studio apartment nestled in the heart of Potts Point, where modern living meets urban sophistication. This thoughtfully designed space offers a perfect blend of style, comfort, and convenience, providing an ideal urban retreat for those seeking a vibrant lifestyle.

This studio apartment is ideally situated in Potts Point, just moments away from trendy cafes, boutique shops, and vibrant nightlife. With public transportation options nearby, you'll have easy access to explore the iconic landmarks and cultural attractions that Sydney has to offer.

Estimate Rental - \$400 - \$420 per week Approx.  
 Water Rates - \$186.50 Quarterly Approx.  
 Council Rates - \$293.10 Quarterly Approx.  
 Strata Levies - \$1,502- Quarterly Approx.

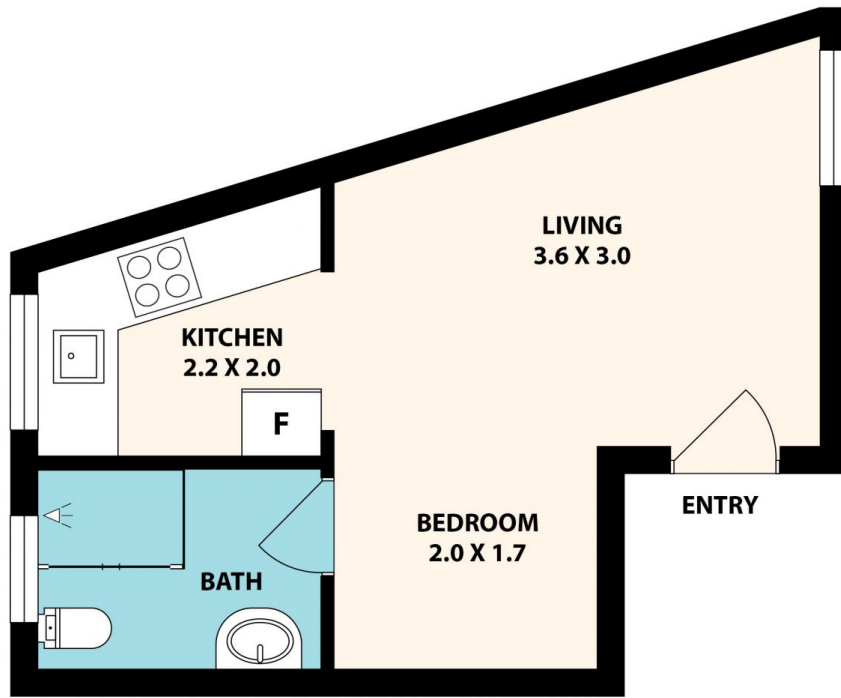
**Price** : \$ 350,000  
**Land Size** : 20 sqm  
**View** : <https://www.luxebyymm.com.au/sale/nsw/eastern-suburbs/potts-point/residential/apartment/7888060>



**Lucy Stylianou**  
 02 9547 0008



**Larissa Stylianou**  
 02 9547 0008



## 1/1A Roslyn St, Potts Point

Floor plan produced by ENFORCEFX.COM - All measurements are approximate. Floor plan is not to scale. All information contained here is believed to be reliable, however we cannot guarantee the accuracy and interested persons should rely on their own enquiries.

ESTIMATE  
INT AREA 20 M<sup>2</sup>

