



### 1A Seville Street Fairfield East NSW

- Entire complex - 4 units to be sold in 1 line.
- Land Area of 4709sqm approx.
- Gross building area of 3692.4sqm approx..
- High Clearance
- Zoned E4

This high clearance industrial warehouse complex located in the heart of Fairfield East. Don't miss your opportunity to purchase a long-lasting asset.

Property features include:

- Entire Complex = 4 factory units in total
- Land Area of 4,709sqm approx.
- Gross building area of 3,692.4sqm approx..
- Average ceiling heights 8.3m approx.
- Container friendly site
- High-visibility frontage to Seville St / Woodville Rd.

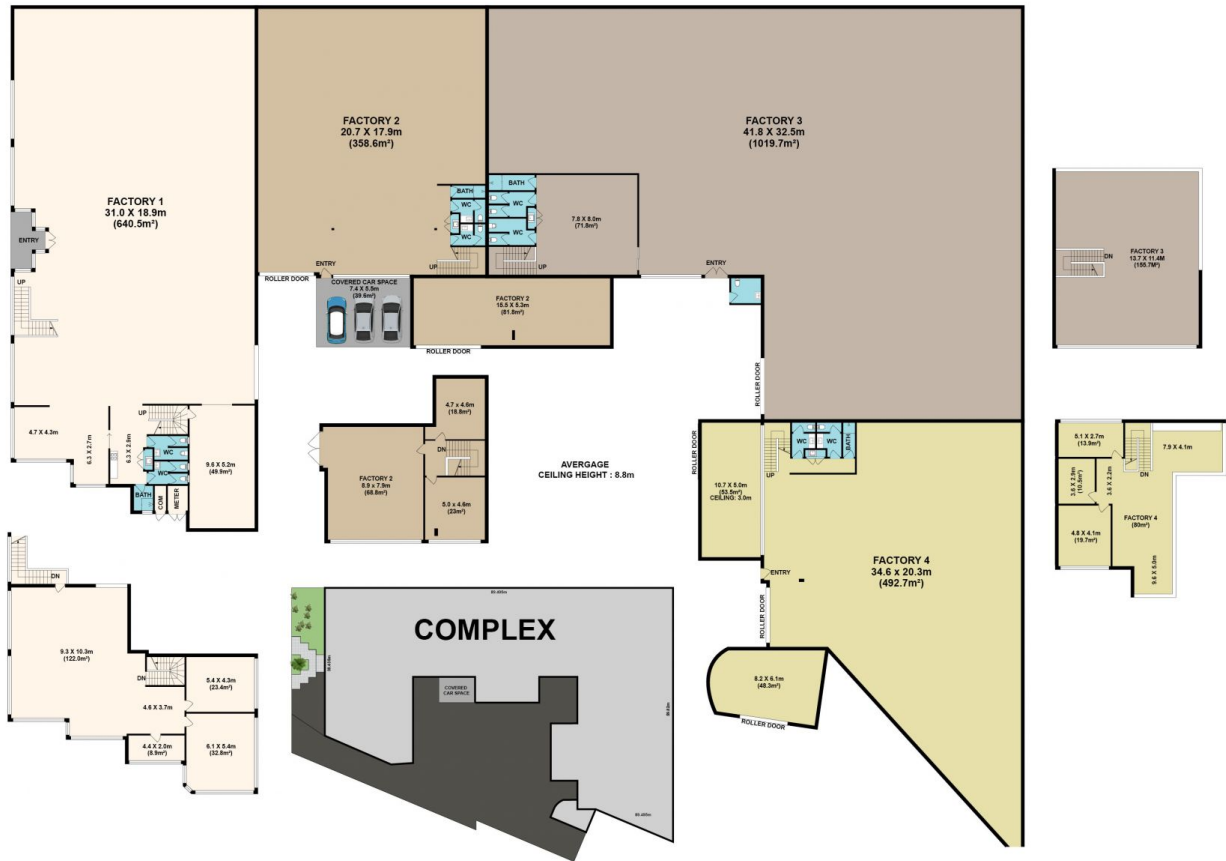
**Price** : OFFERS INVITED - MUST SELL  
**Building Size** : 4709 sqm  
**Land Size** : 4709 sqm  
**View** : <https://www.luxebymm.com.au/sale/nsw/liverpool-fairfield/fairfield-east/commercial/other/7896036>



**Lucy Stylianou**  
02 9547 0008



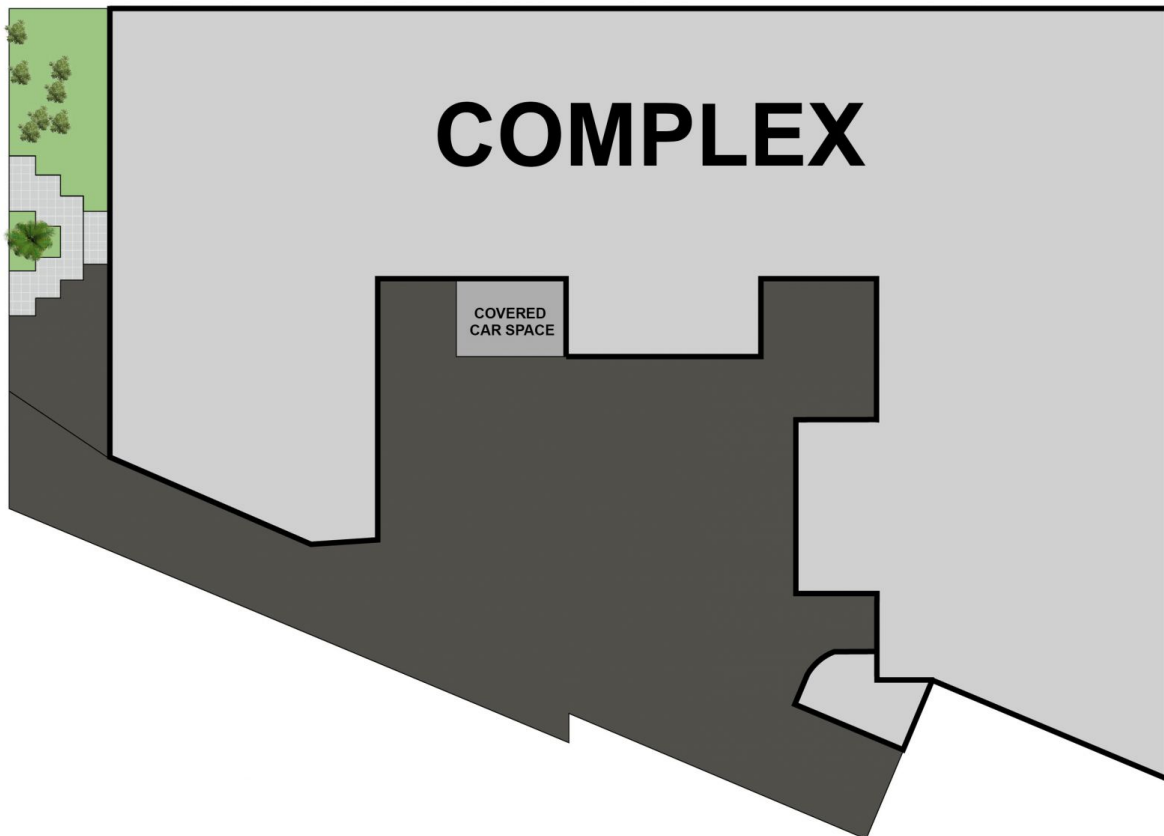
**Maurice Maroon**  
02 9547 0008



1A Seville St, Fairfield East

Floor plan produced by ENFORCEFX.COM - All measurements are approximate. Floor plan is not to scale. All information contained here is believed to be reliable, however we cannot guarantee the accuracy and interested persons should rely on their own enquiries.

ESTIMATE  
INT AREA 3692.4 M<sup>2</sup>



1A Seville St, Fairfield East

Floor plan produced by ENFORCEFX.COM - All measurements are approximate. Floor plan is not to scale. All information contained here is believed to be reliable, however we cannot guarantee the accuracy and interested persons should rely on their own enquiries.

ESTIMATE  
LAND AREA 4079 M<sup>2</sup>

