



45 Homedale Crescent Connells Point NSW

5 3 4

This spacious family home seamlessly blends historical charm with contemporary flair, offering an opportunity to indulge in luxurious indoor/outdoor living. Situated on an expansive 835 square meter plot, it is conveniently located within walking distance of Connells Point Public School, public transportation, and scenic bayside parklands.

Price : \$ 3,110,000
Land Size : 835 sqm
View : <https://www.luxebymm.com.au/sale/nsw/st-george/connells-point/residential/house/7911909>

Luxe Points:

- Elegant spotted gum floors, intricate cornices, and stylish plantation shutters
- Solid brick construction, amazing high orante ceilings
- Luxurious living room, separate dining area, and a dedicated study space
- Extensive blackbutt balcony and expansive Travertine patio for outdoor entertainment
- Additional side courtyard, complete with a solar heated pool and lush fruit trees



Stephen Large
02 9547 0008

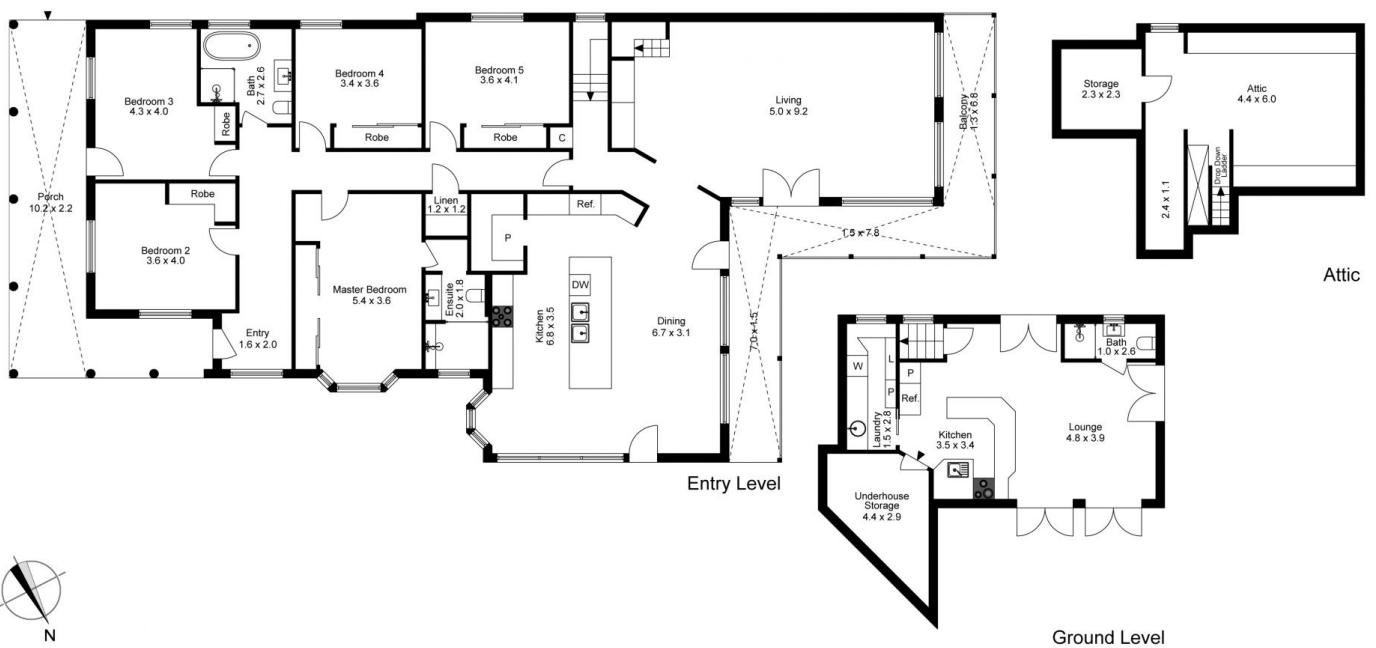


Maurice Maroon
02 9547 0008



The floor plan is not to scale; measurements are indicative and in metres. All features included in this 3D plan are for inspiration purposes only. This is not an exact replica of the property or the position of exterior elements. Plans should not be relied on. Interested parties should make and rely on their own enquiries.

Produced by **DIAKRIT**



The site plan and floor plan are not to scale; measurements are indicative and in metres. Bushes and trees are placed for illustration purposes. Plans should not be relied on. Interested parties should make and rely on their own enquiries.

Produced by **DIAKRIT**