






264-266 Attunga Road Yowie Bay NSW

5  3  6 

Nestled on the shores of Yowie Bay, this extraordinary waterfront property offers an unparalleled blend of opulence, functionality, and breathtaking views. Set on 1,644sqm of land. Boasting a sleek and modern design, this 5-bedroom residence with an inclinator and a self-contained studio in the boathouse promises a lifestyle of unmatched elegance.

Every level of this residence is designed to capture the beauty of its waterfront location.

Entertainment knows no bounds in this waterfront haven. Indulge in cinematic experiences in the dedicated home theatre room. The games room offers a space for relaxation and recreation, ensuring there's something for everyone.

Step outside to your private oasis featuring an inground pool overlooking the water. The low-maintenance block

Land Size : 1644 sqm

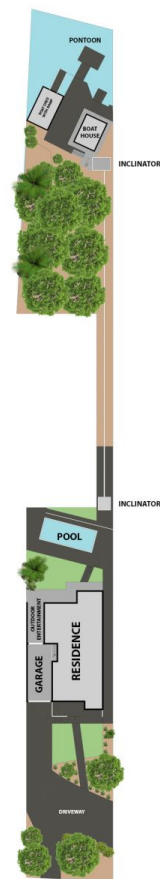
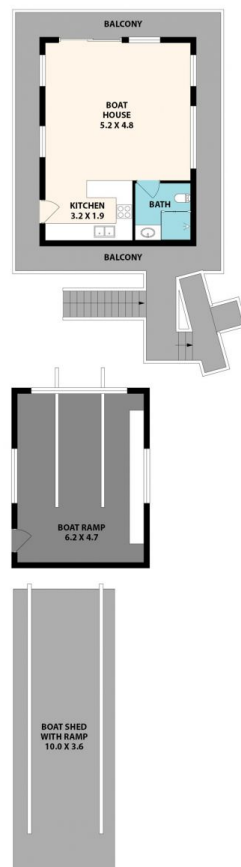
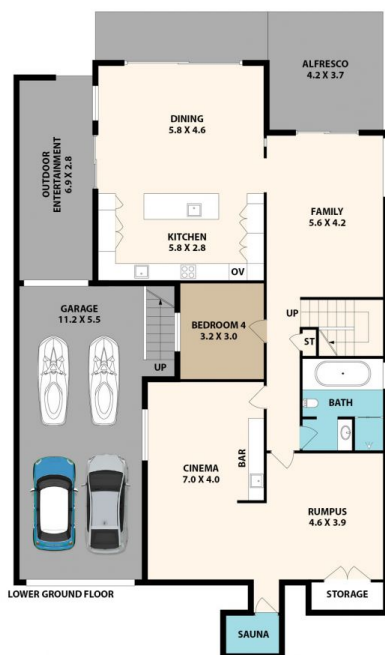
View : <https://www.luxebymm.com.au/sale/nsw/sutherland/yowie-bay/residential/house/7938379>



Maurice Maroon
02 9547 0008



Larissa Stylianou
02 9547 0008



264-266 Attunga Rd, Yowie Bay

Floor plan produced by ENFORCEFX.COM - All measurements are approximate. Floor plan is not to scale. All information contained here is believed to be reliable, however we cannot guarantee the accuracy and interested persons should rely on their own enquiries.

ESTIMATE
INT AREA 680 M²

