



202/474 Princes Highway Blakehurst NSW

1  1  1 

This 1 Bedroom home is positioned in the heart of Blakehurst. Being the only 1 bedroom apartment in the block with a huge 95sqm of living space.

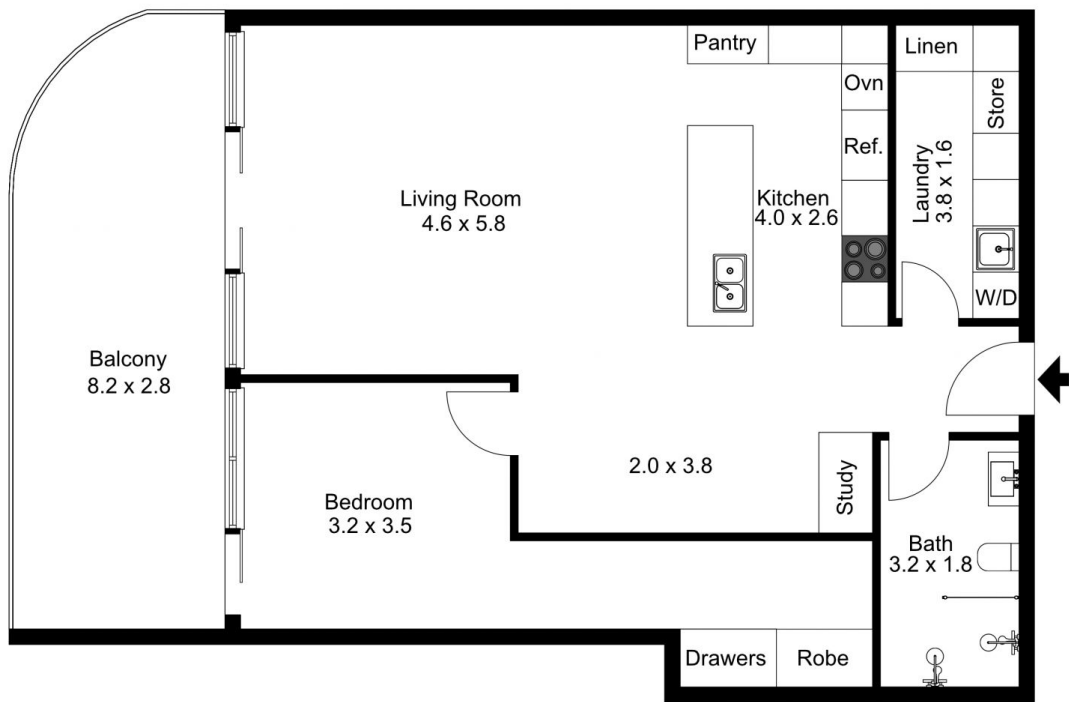
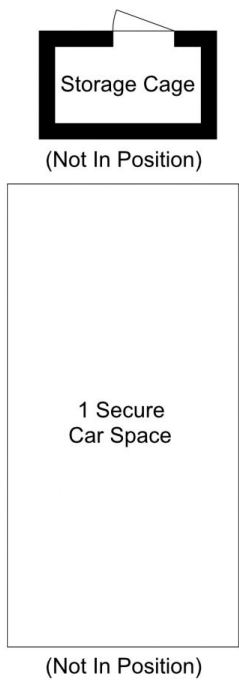
The Upper Deck has direct access to the water via its own private jetty, as well as a rooftop garden, outdoor kitchen, and ground floor communal entertaining area with barbeque facilities and generous outdoor seating.

- Unique waterfront apartment with direct access to the Georges River
- North-east facing building which will bathe these apartments with morning sunlight, while protecting you from the western sun
- Unique one bedroom apartment have unobstructed water views, only two apartments per floor
- Luxury Miele appliances

Land Size : 95 sqm
View : <https://www.luxebymm.com.au/lease/nsw/st-george/blakehurst/residential/apartment/7960008>



Sookie Yue Luo
02 9547 0008



The floor plan is not to scale; measurements are indicative and in metres. Exterior elements are not in position. Plans should not be relied on. Interested parties should make and rely on their own enquiries.

Produced by **DIAKRIT**



The floor plan is not to scale; measurements are indicative and in metres. All features included in this 3D plan are for inspiration purposes only. This is not an exact replica of the property or the position of exterior elements. Plans should not be relied on. Interested parties should make and rely on their own enquiries.

Produced by **DIAKRIT**