



**Level 8/805/10 Village Place Kirrawee NSW**

1 🛏 1 🚿 1 🚗

Introducing a sophisticated oversized one-bedroom retreat nestled in the vibrant South Village precinct. Revel in the panoramic vistas of the grounds and the National Park, from your expansive living space, adorned with top-tier finishes that define contemporary luxury living.

**Price** : \$ 675,000  
**Land Size** : 103 sqm  
**View** : <https://www.luxebyymm.com.au/sale/nsw/sutherlandland/kirrawee/residential/apartment/7984869>

**Luxe Points:**

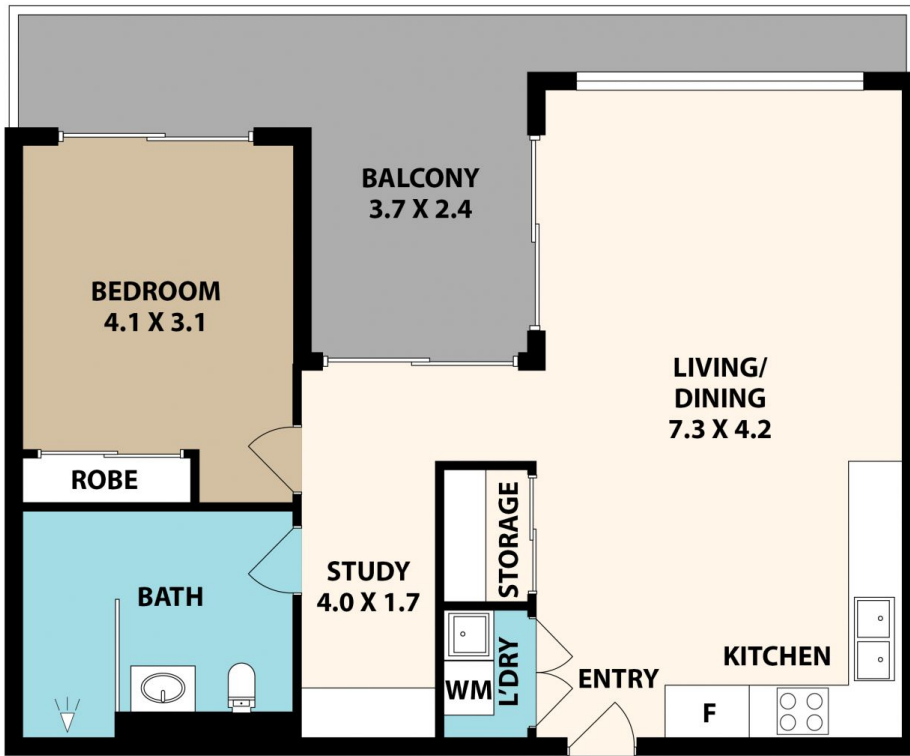
- Spacious Open-Plan Living: Enjoy comfort year-round with air conditioning.
- Gourmet Kitchen: Delight your inner chef with a gourmet kitchen featuring gas cooking and premium European appliances.
- Luxurious Main Bedroom: Retreat to your serene main bedroom, complete with a built-in wardrobe, and access to a breezy open-air balcony.
- Convenient Study: Productivity meets style in the well-appointed study area with a built-in desk, perfect for



**Lucy Stylianou**  
02 9547 0008



**Larissa Stylianou**  
02 9547 0008



805/10 Village Pl, Kirrawee

Floor plan produced by ENFORCEFX.COM - All measurements are approximate. Floor plan is not to scale. All information contained here is believed to be reliable, however we cannot guarantee the accuracy and interested persons should rely on their own enquiries. ESTIMATE TOTAL AREA 110 M<sup>2</sup>

