






10 Kyle Parade Kyle Bay NSW

4  2  5 

High-end design meets lifestyle appeal in this luxurious contemporary residence where every detail has been thoughtfully considered to create a balance of style and functionality. It is the essence of family excellence boasting a striking architectural look and a low-maintenance feel that focuses on spacious living with relaxing water views over Kyle Bay.

With a flowing layout that seamlessly interacts from indoors to outdoors, it's perfect for those who love alfresco entertaining. This stunning home boasts separate formal and casual living spaces, plus a brand-new kitchen superbly finished with stunning bench top, a breakfast island and fitted with premium Miele appliances.

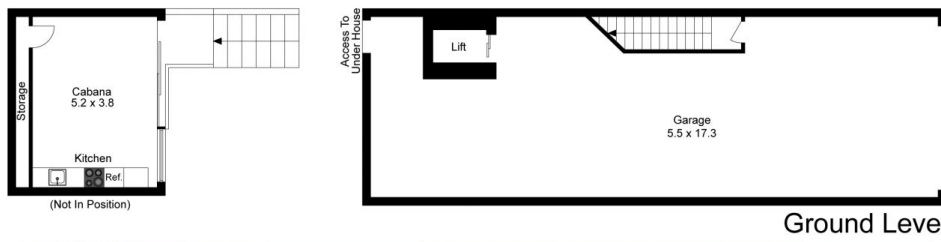
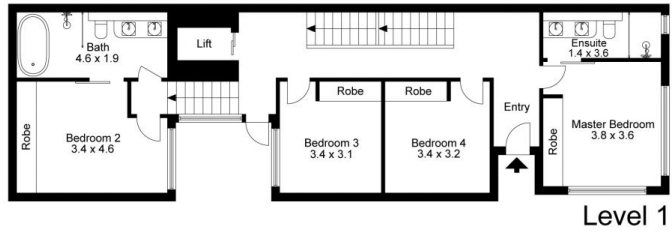
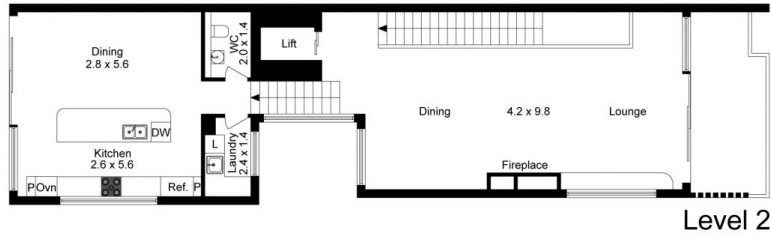
Type : House

View : <https://www.luxebyymm.com.au/lease/nsw/st-george/kyle-bay/residential/house/8148559>



Belinda Allsopp
02 9547 0008

[For full version visit the website](https://www.luxebyymm.com.au)



The site plan and floor plan are not to scale; measurements are indicative and in metres. Bushes and trees are placed for illustration purposes. Plans should not be relied on. Interested parties should make and rely on their own enquiries.

Produced by **DIAKRIT**

