



3/10 Corea Street Sylvania NSW

2  2  2 

Providing a fresh and easycare townhouse lifestyle, this quality residence offers a private retreat in Sylvania's sought-after Highstyle complex. It is quietly tucked away in leafy surrounds and features a light-filled layout, modern finishes and low-maintenance outdoor areas that all combine to deliver a superb home that's set up high to capture a lovely northerly view over the Georges River.

Flowing and sundrenched interiors include open living and dining areas with cool tiled flooring, a modern gas kitchen and easy level access to a great-sized north-facing courtyard. Two upstairs bedrooms both have custom built-in wardrobes and access to a wide water-view terrace. There is also a deluxe ensuite with spa bath, a main bathroom and direct internal access to a double lock-up

Type : Townhouse
Price : Asking Price \$1,795,000
Building Size : 241 sqm
View : <https://www.luxebyymm.com.au/sale/nsw/sutherland/sylvania/residential/townhouse/8272665>

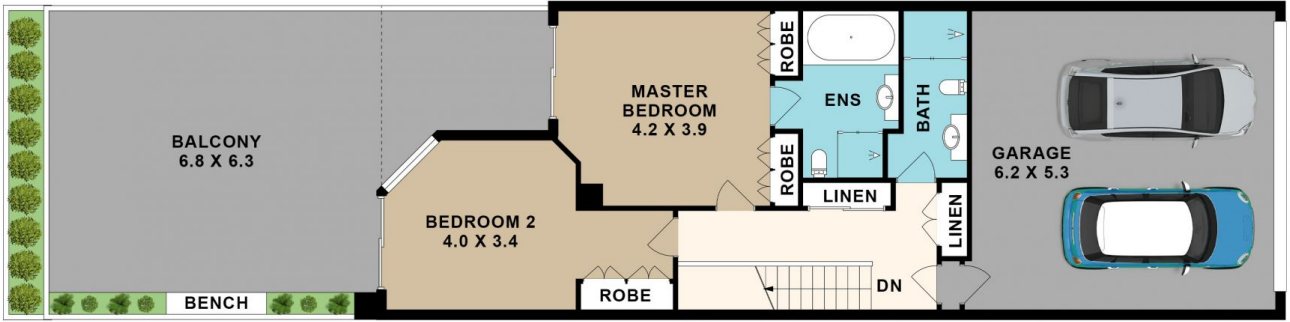
[For full version visit the website](#)



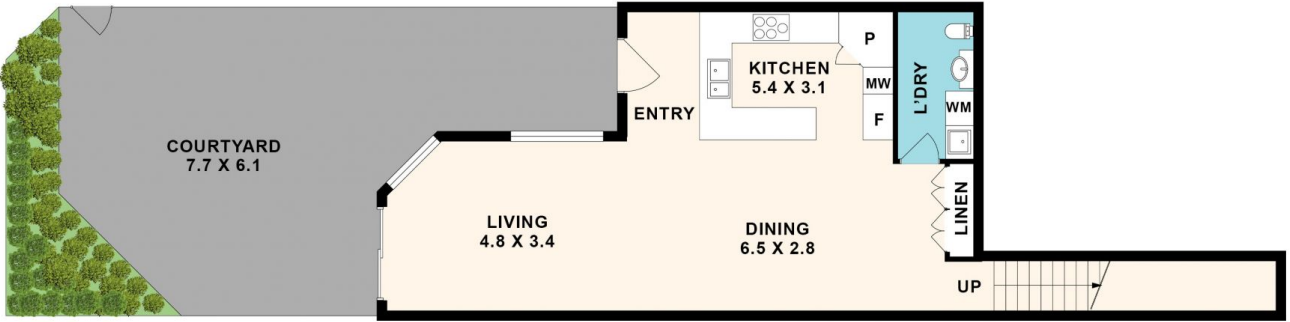
Maurice Maroon
02 9547 0008



Heidi Baines
02 9547 0008



FIRST FLOOR



GROUND FLOOR

3/10 Corea Street, Sylvania

Floor plan produced by ENFORCEFX.COM - All measurements are approximate. Floor plan is not to scale. All information contained here is believed to be reliable, however we cannot guarantee the accuracy and interested persons should rely on their own enquiries.

